



OPEN BELGIAN CHAMPIONSHIP DRAGON 2009

August 12th ,13th , 15th & 16th , 2009

ORGANISING AUTHORITY

R O Y A L N O R T H S E A Y A C H T C L U B

Montgomerykaai 1
8400 OOSTENDE

TEL +32 (0)43 06 94
E-mail: info@rnsyc.be

FAX +32 (0)59 51 32 70
URL : www.rnsyc.be



With the collaboration of

B E L G I A N D R A G O N C L A S S A S S O C I A T I O N

Benoit Quatannens, Vaartstraat 13, 8400 Oostende

E-mail hyperlink secretary@beldragon.be

Website hyperlink www.beldragon.be

N O T I C E O F R A C E

1 RULES

The regatta will be governed by:

- 1.1 The rules as defined in The Racing Rules of sailing 2009-2012 (ISAF).
- 1.2 The prescriptions for the Belgian Championship of the national authority (KBYV – FRYB) will apply.
- 1.3 The International Dragon Class rules and regulations will apply.
- 1.4 This Notice of Race and the Sailing instructions. (In the case of a conflict the Sailing Instructions shall prevail)
- 1.5 Rule(s) 13.30 of the Dragon class rules will not apply (Crew weight restriction)
- 1.6 If there is a conflict between languages the English text will take precedence.

2 ADVERTISING

Advertising will be restricted to Category A. (See ISAF regulation 20)

3 ELIGIBILITY AND ENTRY

- 3.1 The regatta is open to yachts of the International Dragon Class (IDA)
- 3.2 Only eligible yachts for which a signed Entry Form has been received, registration and measurement have been completed, and the full entry fee has been paid before the warning signal for the first race are entitled to race.
- 3.3 ISAF eligibility requirements under RRS Appendix 2-21.2 (See rule 75.2) shall apply.
- 3.4 All Belgian Dragon owners must be member of the Belgian Dragon Association.
- 3.5 Belgian helmsmen and crew-members must be bearer of a Belgian Sailing License.
- 3.6 Belgian crew-members are deemed to be member of the Belgian Dragon Association, if it is the second time they participate in a Belgian Dragon Championship.
- 3.7 No yacht shall enter the regatta with any unmeasured sail

4 ENTRIES & REGISTRATION

- 4.1 Required entry fee is 300 €. - Haul-in included.
Prepayment can be done by bank transfer before August 7th 2009.
After this date the fee will be majored with 50 €
- 4.2 In order to be valid, each entry should include:
 - The original “entry form”,
 - Proof of paid entry fee,
 - A copy of measurement certificate, - A copy of the insurance policy. (See insurance § 13),
- 4.3 The specific sailing instructions will be handed over after registration and payment.
- 4.4 All forms etc. shall be sent to:

Belgian Dragon Association (BDA) :

Web entry : <http://www.beldragon.be/bda/boc/entryform.asp>

Bank account: Account name: Association Belge de la classe Dragon ASBL

Account code: 310-0491696-89

Swift code: BBRUBEBB

IBAN: BE45 3100 4916 9689

5 SCHEDULE

- 5.1 Registration and launching:

| | |
|-----------------------------------|---|
| Day | Hrs (all times are local times – GMT + 2) |
| Wednesday August 12 th | 15.00hrs to 18.00hrs |
| launching | 17.00hrs to 20.00hrs |
| | registration |
- 5.2 Racing

| | |
|----------------------------------|--|
| Day | Hrs (All times are local times –GMT+2) |
| Thursday August 13 th | 10.30hrs Briefing competitors at the Club House |



| | | |
|----------------------------------|-----------|--------------------------------------|
| | 12.55hrs | Warning signal first race |
| Friday August 14 th | 10.55 hrs | Warning signal first race of the day |
| Saturday August 15 th | 10.55hrs | Warning signal first race of the day |
| Sunday August 16 th | 10.55hrs | Warning signal first race of the day |

- 5.3 The number of races scheduled is 9.
- 5.4 No more than 3 races will be sailed on the same day.
- 5.5 The R.N.S.Y.C. and the Belgian Dragon Association reserve the right to organise some social event which will be advised upon registering.

6 SAILING INSTRUCTIONS

The sailing instructions will be available on Wednesday at registration.

7 VENUE

- 7.1 Attachment 1 page 5 shows the location of the regatta harbour.
- 7.2 The notice board shows the location of the racing areas, West of Binnen- and Buitenstroombank Buoy (max. 2, 5 NM from the entrance of Ostend harbour.)

8 THE COURSES

Courses to be sailed will be upwind/downwindward courses.

9 PENALTY SYSTEM

The rules 44.1 and 44.2 will be apply.

10 SCORING

- 10.1 The Low Point System of RRS Appendix A4.1 will apply except that in A4.2 a boat did not start, did not finish, retired after finishing or was disqualified shall be scored points for the finishing place one more than the number of boat confirmed at registration.
- 10.2 Three valid races are required to constitute the “Open Belgian Championship”.



- 10.3 When 4 or more valid races have been completed, the worst score in a race of each boat shall be deducted.

11 BERTHING

Yachts shall be kept in their assigned places in the RNSYC dock.

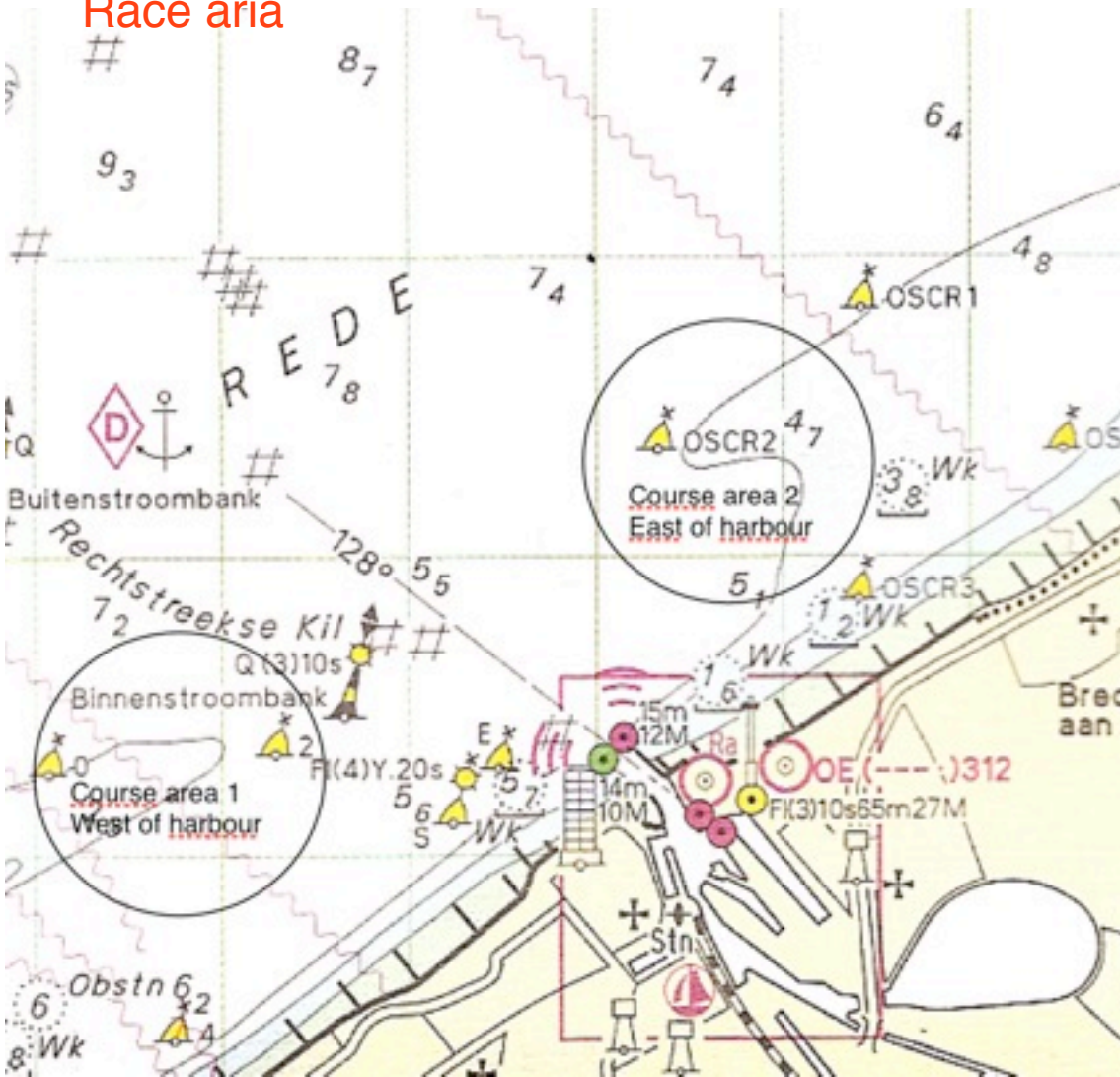
12 HAUL-OUT RESTRICTIONS

Yachts shall not be hauled out during the regatta except with and according to the terms of prior written permission of the jury.

13 RADIO COMMUNICATION - ELECTRONIC EQUIPMENT

- 13.1 A yacht shall neither make radio transmissions nor receive radio communications while racing.
- 13.2 Electronic equipment other than timers and compasses permitted by the Class Rules shall not be carried on board

Race area



except for cellular phones which shall be switched off while racing.

14 PRIZES

Prizes will be given for the first three Yachts.

15 DISCLAIMER OF LIABILITY

- 15.1 The safety of a yacht and her entire management including insurance shall be the sole and inescapable responsibility of the owner or competitor racing the yacht. He shall ensure that the yacht and crew are adequate to face the conditions, which may arise in the course of the race(s). Neither the establishment of Sailing Instructions nor the inspection of the yacht under these conditions, in any way limits or reduces the absolute responsibility of the owner/competitor for the crew, the yacht and the management thereof. (See RRS Rule 4)
- 15.2 The Royal North Sea Yacht Club vzw their employees and or agents shall not be liable for any loss, damage, death or personal injury however caused to the owner/competitor or crew as a result of their taking part in the regatta.

16 LIABILITY AND INSURANCE

- 16.1 A yacht is entirely responsible for her own safety, whether afloat or ashore and nothing whether in the Notice of Race or Sailing Instructions or anywhere else, reduces this responsibility.
- 16.2 It is for the yacht to decide whether she is fit to sail in the conditions in which she will find herself. By going to sea, the yacht confirms that she is fit for those conditions and her crew is competent to sail and compete in them. (See RRS 4).
- 16.3 Yachts owners and competitor's crews must ensure that they are adequately insured against loss, damage or injury to persons, yachts or equipment at any time however occurring and maintain insurance against third party claims from arrival till departure from Oostende and this for the entire duration of the event. The organisers will request a written proof of such an insurance with a minimum coverage against third party claims of 1.000.000€ or its equivalent in foreign currency at the time registration.

16.4 Nothing done by the organisers can reduce the responsibility of the yacht nor will it make the organisers responsible for any loss, damage, death or personal injury; however it may occur as a result of the yacht taking part in the racing. The organisers encompass everyone helping to run the racing and the event and include the Organising Authority, the Race Committee, Race Officer and rescue boats.

16.5 The provision of rescue boats does not relieve the boat of her responsibilities.

16.6 The fact that the Race Committee conducts inspections of the yacht does not reduce the responsibilities of the yacht set out in this paragraph.

16.7 Competitors are also advised to arrange their own personal accident insurance.

17 FURTHER INFORMATION

For accommodation please contact:

Toerisme Oostende vzw
Monacoplein 1, 8400 Oostende
Tel: +32(0)59 70 11 99
Fax: +32(0)59 70 40 35
E-Mail: info@toerisme-oostende.be
URL : www.oostende.be

Royal North Sea Yacht Club
Montgomerykaai 1
8400 OOSTENDE
TEL +32(0)43 06 94 FAX +32(0)59 51 32 70
Harbour Master +32(0)59 50 59 12
Bank : ING 384-0051829-18
IBAN BE50 3840 0518 2918
BIC : BBRUBEBB
E-mail: info@rnsyc.be URL: www.rnsyc.be

Web entry : <http://www.beldragon.be/bda/boc/entryform.asp>

